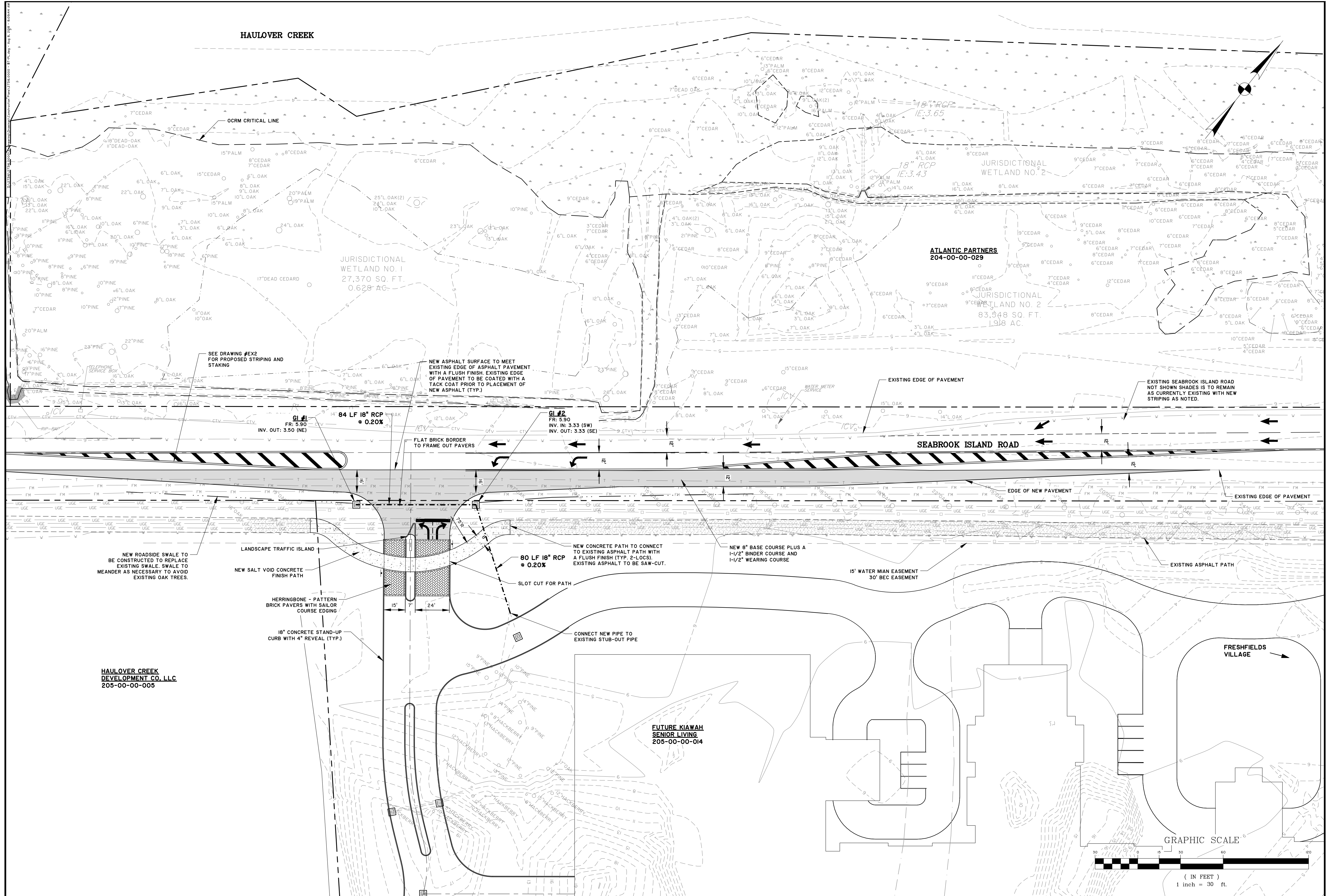


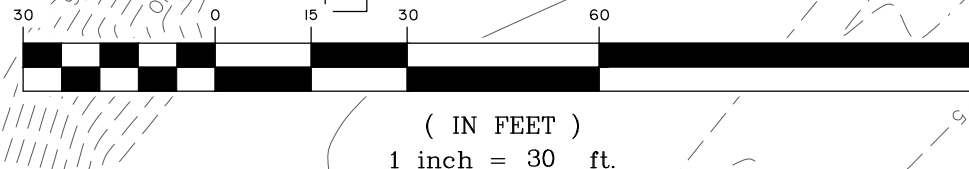
HAULOVER CREEK



HAULOVER CREEK DEVELOPMENT CO. LLC
205-00-00-005

FUTURE KIAWAH SENIOR LIVING
205-00-00-014

GRAPHIC SCALE



NO.	REVISIONS	BY	DATE

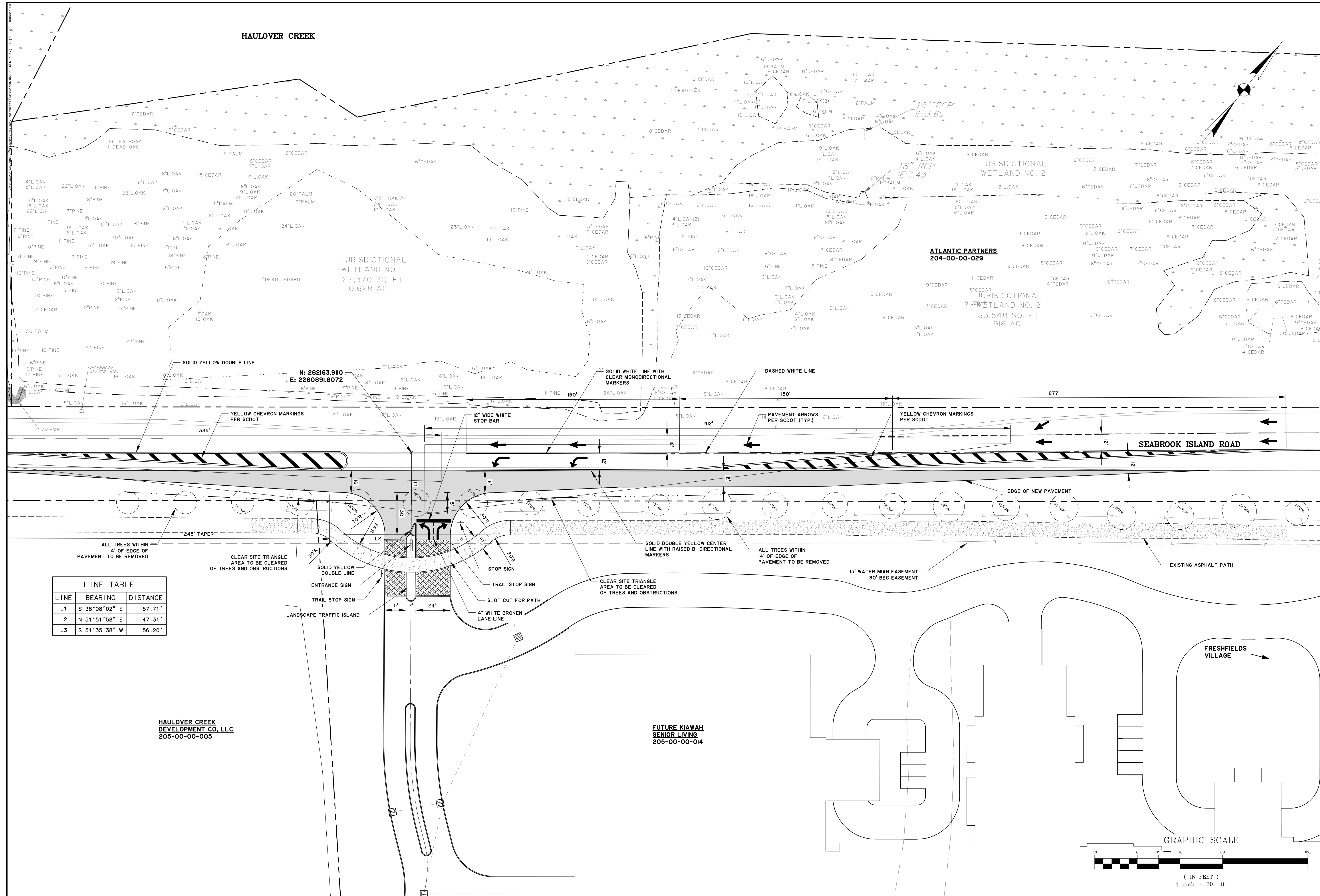
THOMAS & HUTTON
 682 Johnnie Dodds Boulevard • Suite 100
 Mt. Pleasant, SC 29464 • 843.849.0200
 www.thomasandhutton.com

ATLANTIC PARTNERS, LLC
 CHARLESTON COUNTY, SOUTH CAROLINA
SEABROOK ISLAND INTERSECTION
GENERAL LAYOUT

JOB NO:	J-27316.0000
DATE:	8/7/18
DRAWN:	BRW
DESIGNED:	WEF
REVIEWED:	WEF
APPROVED:	TMW
SCALE:	1" = 30'

EX1

HAULOVER CREEK



JURISDICTIONAL WETLAND NO. 1
27,370 SQ. FT.
0.628 AC.

ATLANTIC PARTNERS
204-00-00-029

JURISDICTIONAL WETLAND NO. 2
83,548 SQ. FT.
1.918 AC.

N: 282163.9110
E: 2260891.6072

LINE	BEARING	DISTANCE
L1	S 38°08'02" E	57.71'
L2	N 51°51'58" E	47.31'
L3	S 51°35'38" W	56.20'

HAULOVER CREEK
DEVELOPMENT CO. LLC
205-00-00-005

FUTURE KIAWAH
SENIOR LIVING
205-00-00-014

NO.	REVISIONS	BY	DATE

THOMAS & HUTTON
682 Johnnie Dadds Boulevard • Suite 100
Mt. Pleasant, SC 29464 • 843.849.0200
www.thomasandhutton.com

ATLANTIC PARTNERS, LLC
CHARLESTON COUNTY, SOUTH CAROLINA
SEABROOK ISLAND INTERSECTION
STAKING AND SIGNAGE PLAN

JOB NO: J-27316.0000
DATE: 8/7/18
DRAWN: BRW
DESIGNED: WEF
REVIEWED: WEF
APPROVED: TMW
SCALE: 1" = 30'

EX2

